

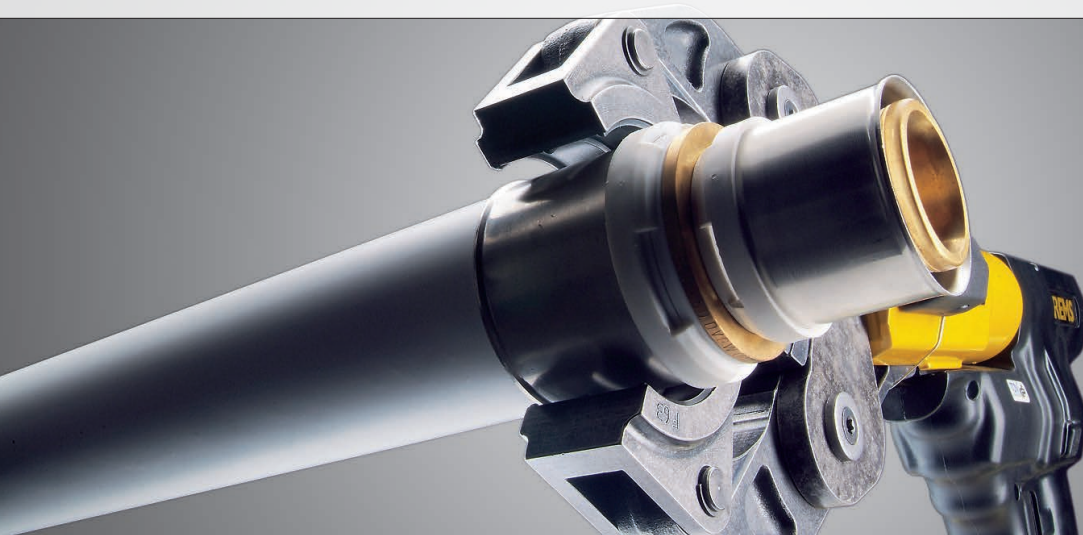
Product brochure

## alpex L



Multilayer composite pipe system in dimensions of 40 to 75 mm  
for drinking water and heating installations





## alpex L

### alpex L pipe

The high-quality composite pipe consists of a cross-linked polyethylene inner surface, a butt-welded aluminium core, and an outer pipe made of polyethylene of raised temperature resistance. The three layers are joined with a special adhesion agent to form a single durable product.

- good compatibility with other materials
- high chemical resistance
- 100 % impermeable to oxygen
- low thermal linear expansion, comparable with copper
- impervious to encrustation and sediment



### alpex L fitting

The alpex L fittings are made of high-performance PPSU plastic or dezincification-resistant brass, and are equipped with pre-assembled stainless steel sleeves. The four dimensions between 40 and 75 mm can be crimped quickly and easily using the alpex crimping jaw with F-contour.

- flow-optimised
- fittings made of PPSU and dezincification-resistant brass
- double safety due to two O-rings
- easy visual inspection of the insertion depth due to extra large inspection holes
- leaking if left uncrimped according to DVGW W 534



### Compatibility

The alpex L system which can be crimped using the F-contour is an ideal addition to our alpex system for plumbing and heating installations in dimensions of 16 to 32 mm. Regardless of whether it is about the laying of long pipe sections in industrial buildings, the installation of basement pipe runs or riser pipes in residential buildings – durable alpex L pipes in straight lengths ideally meet your demands for easy and proper installation of large pipe dimensions.

### Controlled safety



**kiwa**





## Technical data

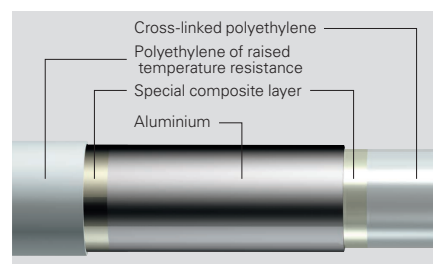
### System

DN	32	40	50	65
Dimension [mm]	40 × 3.5	50 × 4.0	63 × 4.5	75 × 5.0
Operating temperature [°C]	max. 95 (permanent)			
Operating pressure [bar]	max. 10			
Material class DIN EN 13501-1	E			
Application	Drinking water and heating installations			



### Multilayer composite pipe

Material	PE-X/AL/PE-RT
Thermal conductivity [W/(m·K)]	0.45
Linear expansion [mm/(m·K)]	0.026



### Fittings

Type	Threadless	Threaded connectors
Material	Polyphenylsulfone (PPSU); dezincification-resistant brass (dim. 75 mm)	Dezincification-resistant brass
Crimp sleeve	Stainless steel	
Crimping contour	F	
Leak function acc. to W534	Yes	



## Benefits at a glance



COMPLIANCE WITH  
GERMAN ENVIRONMENT  
AGENCY / DRINKING  
WATER ORDINANCE



95 °C

HIGH CONTINUOUS  
OPERATING  
TEMPERATURE



LEAK FUNCTION



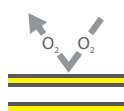
SUPERIOR  
MATERIAL QUALITY



DURABILITY



SYSTEM COMPATIBILITY



100 % IMPERMEABLE  
TO OXYGEN



INCRUSTATION-FREE



HYGIENICALLY SOUND



# FRÄNKISCHE

FRÄNKISCHE Rohrwerke Gebr. Kirchner GmbH & Co. KG | Hellinger Str. 1 | 97486 Königsberg/Germany  
Phone +49 9525 88-2200 | Fax +49 9525 88-2411 | [marketing@fraenkische.de](mailto:marketing@fraenkische.de) | [www.fraenkische.com](http://www.fraenkische.com)

EN.70199/5.03.24 | Subject to change without notice | Cat. no. 5000-1153-00 | 04/2023

