

Operating instructions

profi-air® cleaning set SaWi classic NW 63 / 75

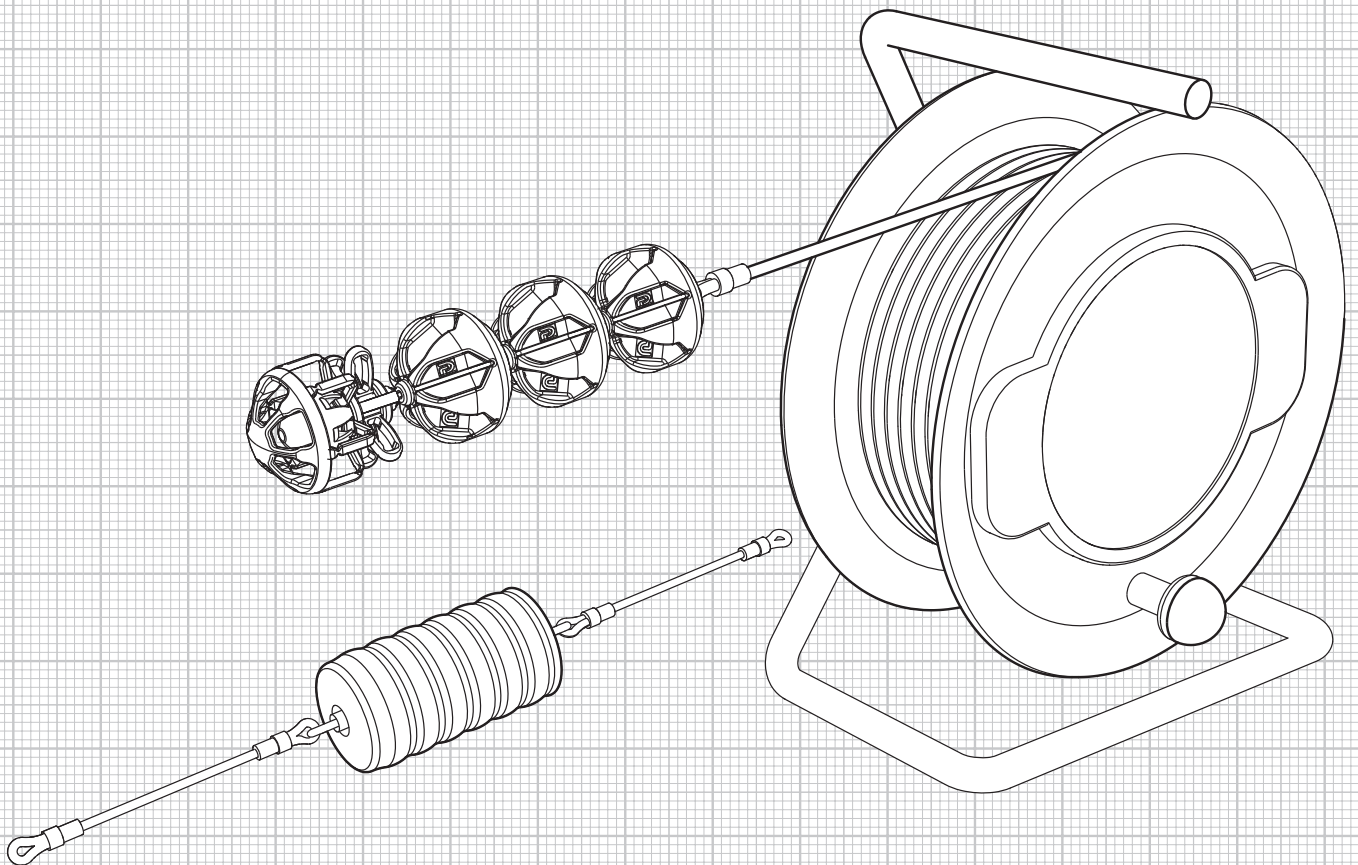


Table of contents

1 General information	4
1.1 Introduction	4
1.2 Safety	4
1.3 Intended use	5
2 Description of the profi-air SaWi cleaning set	6
2.1 Overview of the profi-air cleaning sets / scope of delivery	6
2.1 Description of the components	7
3 Preparation for cleaning	7
4 Cleaning	8
4.1 Valves located below the manifolds	9
4.2 Valves located above the manifolds	13
5 Maintenance and cleaning	17
6 Warranty	17
7 Liability	18
8 Disposal	18

1 General information

The SaWi profi-air classic cleaning set for profi-air allows easy, reliable and efficient cleaning of our profi-air classic pipes.

1.1 Introduction

These operating instructions are intended to help you properly operate the SaWi cleaning set for profi-air. For this reason, we recommend that you read these instructions carefully before you commence cleaning activities.

1.2 Safety

If used as intended, the system is safe and reliable to operate. The construction and design are state of the art and comply with all relevant DIN / VDE regulations and safety provisions. All safety regulations, warnings and notes of these operating instructions have to be observed; non-observance might result in personal injury and/or damage to the SaWi cleaning set for profi-air and/or the profi-air pipe system.

1.2.1 Safety regulations

- Non-authorized changes or modifications of the SaWi cleaning set for profi-air are not allowed.
- Keep these operating instructions during the entire life of the SaWi cleaning set for profi-air.

1.2.2 Safety equipment and measures

- Always ensure stable footing when using the SaWi cleaning set for profi-air.
- Hold the SaWi cleaning set for profi-air tightly during the vacuuming process.
- Wear appropriate protective gloves during all activities with the pull / safety cord.

1.2.3 Symbols used



Risk of personal injury



Risk of:

- Damage to the cleaning set
- Damage to the pipe system
- Errors while using the cleaning set if the instructions are not followed correctly
- Other material damage



Additional notes



Always wear protective gloves.



A conventional household vacuum cleaner is required.

1 General information

1.3 Intended use

The SaWi cleaning sets for profi-air have been designed and constructed exclusively for cleaning the profi-air classic pipe installations in the field of heat recovery ventilation, and are solely intended for this application.



Make sure that only the components of the profi-air classic pipe system are installed.



Make sure that the profi-air pipe installation has the same NW consistently along the cleaning section, and use the corresponding profi-air cleaning set only.



The cleaning system is suitable for a maximal pipe length of 15 m with a maximum of six 90° redirections. If there are fewer redirections, a longer pipe section is possible (1.5 m more pipe length per redirection).





Please ensure the profi-air pipe installation you wish to clean has been flawlessly installed and there are no objects in the pipe system. Otherwise, there is a risk that the cleaning tool will get stuck.



If you have any doubt, please contact the installer of the profi-air pipe system.

2 Description of the profi-air® SaWi cleaning set

2.1 Overview of the profi-air® cleaning sets / scope of delivery

Illustration	Catalogue number	Contents
	79000801	<ul style="list-style-type: none"> ■ 1 pull unit NW 63 / 75 each ■ 2 foam pigs NW 63 / 75 each ■ 1 adapter and 1 plug NW 75 ■ 1 adapter and 2 plugs NW 63 ■ 1 adapter DN 100 / 125 each ■ 10 cleaning cloths NW 63 / 75 each ■ 1 cloth attachment aid NW 63 / 75 each ■ 2 pull and safety cords
	79000802	<ul style="list-style-type: none"> ■ 1 pull unit NW 63 ■ 3 foam pigs NW 63 ■ 1 adapter and 2 plugs NW 63 ■ 1 adapter DN 100 / 125 each ■ 20 cleaning cloths NW 63 ■ 1 cloth attachment aid NW 63
	79000803	<ul style="list-style-type: none"> ■ 1 pull unit NW 75 ■ 3 foam pigs NW 75 ■ 1 adapter and 1 plug NW 75 ■ 1 adapter DN 100 / 125 each ■ 20 cleaning cloths NW 75 ■ 1 cloth attachment aid NW 75
	79000804	<ul style="list-style-type: none"> ■ 10 cleaning cloths NW 63
	79000805	<ul style="list-style-type: none"> ■ 10 cleaning cloths NW 75
	79000806	<ul style="list-style-type: none"> ■ 1 pull and safety cord

2 Description of the profi-air® SaWi cleaning set

2.1 Description of the components

Depending on the profi-air cleaning set, not all of the depicted components are included.



Adapter DN 100 / 125



Adapter NW 63 / 75



Plug NW 63 / 75



Cloth attachment aid NW 63 / 75



Pull unit NW 63 / 75



Foam pig NW 63 / 75



Pull and safety cord



Cleaning cloths NW 63 / 75

3 Preparation for cleaning

Before you start cleaning, please go through the following points and observe these.



Observe all safety notes specified in these operating instructions.



Remember that the SaWi cleaning set for profi-air may be used within the scope of its "intended use" only (see Section 1.3).



Always secure the cleaning pig with two pull and safety cords to make sure you can pull it out of the pipe in case of emergency.



Insert the pull unit into the pipe system only when the pull and safety cord is attached.



Ensure the area where you are going to work is clear and easily accessible. You may require a ladder to have a stable footing under the ventilation outlet.



Have a conventional vacuum cleaner ready. Have the respective profi-air cleaning set as well as the pull and safety cords ready.



Make sure that you have enough cleaning cloths at your disposal.



Wear protective gloves during all work steps marked accordingly; otherwise, there is a risk of injury.

4 Cleaning

Two (optionally three) main steps are required to clean the profi-air classic pipe system:

1. Vacuum intake of the pull unit. During this step, loose dirt is removed by means of high air velocity around the pull unit.
2. Pulling the cleaning pig with the cleaning cloth through the system; this procedure shall be repeated several times depending on the degree of pollution.
3. Optionally:
During the last wiping step of the cleaning pig with the cleaning cloth, the cloth can be soaked with a disinfectant in order to disinfect the air-ducting surface of the pipe.



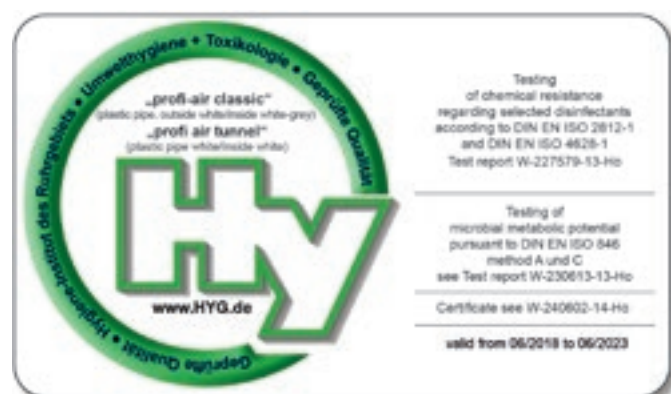
Scan now

and watch the SaWi cleaning set for profi-air **application video** on YouTube.

The following disinfectants have been tested by the Ruhr District Institute of Hygiene (*Hygiene-Institut des Ruhrgebietes*) with regard to chemical resistance of our profi-air pipes:

Test substance	Active ingredient group	Manufacturer	Application concentration
Freka-NOL	Alcohol	Fresenius-Kabi Deutschland GmbH	100 %
Incidin Plus	Alkylamine derivative	Ecolab GmbH & Co. KG / Ecolab Deutschland GmbH	1 %
Quartamon®Med	Quaternary compound	Schülke & Mayr GmbH	2 %
perform	Peroxide compound	Schülke & Mayr GmbH	0.5 %

profi-air pipe hygiene certification



4 Cleaning

4.1 Valves located below the manifolds

This section describes the cleaning process with the valves installed below the manifold (see drawing).



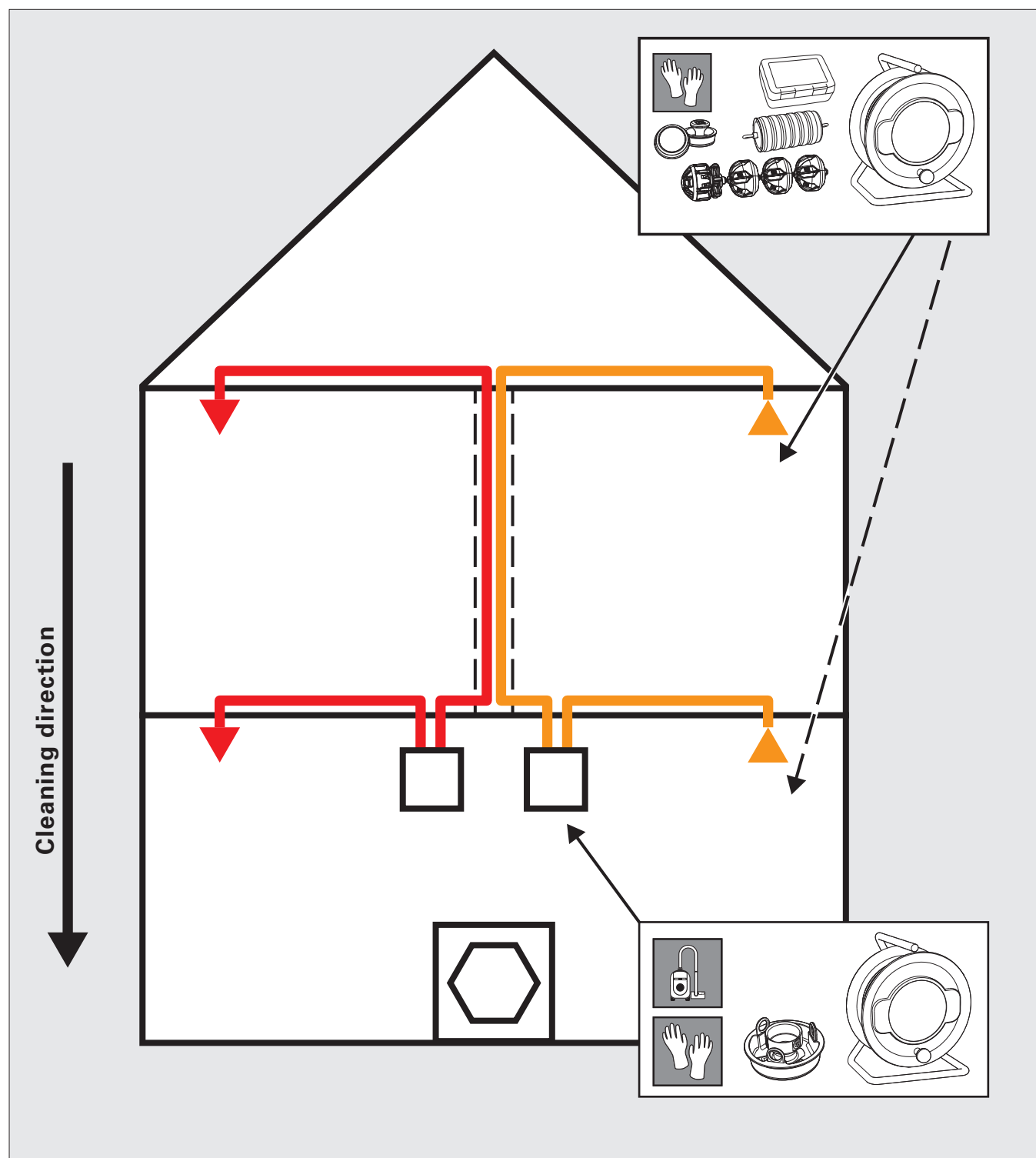
Always secure the cleaning pig with two pull and safety cords. This will allow you to pull it out of the pipe in case of emergency.



Wear protective gloves during all work steps marked accordingly; otherwise, there is a risk of injury.

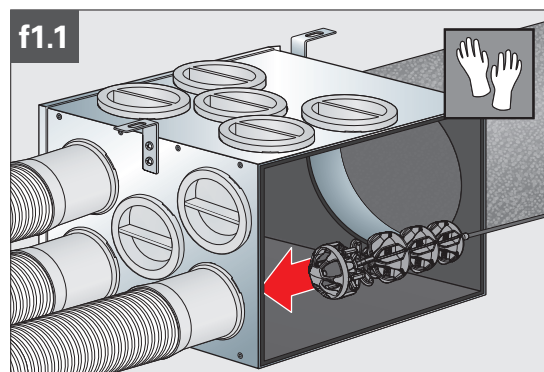
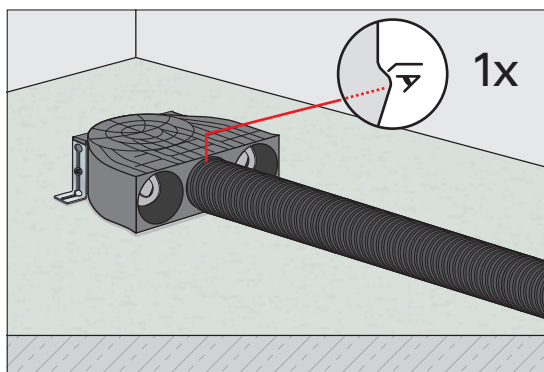
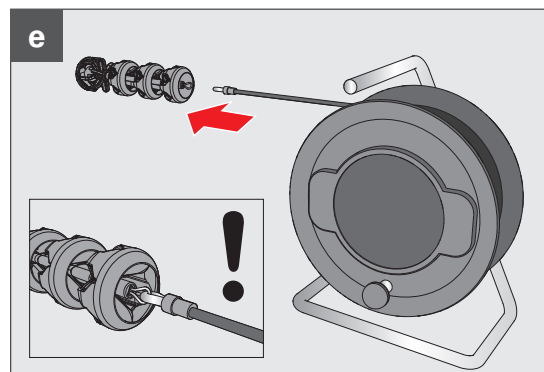
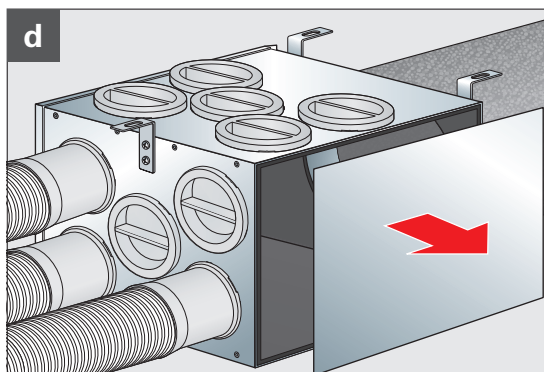
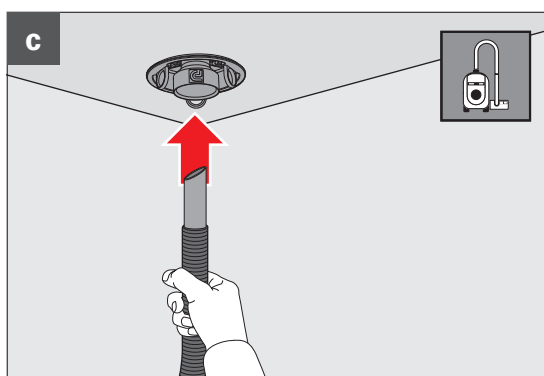
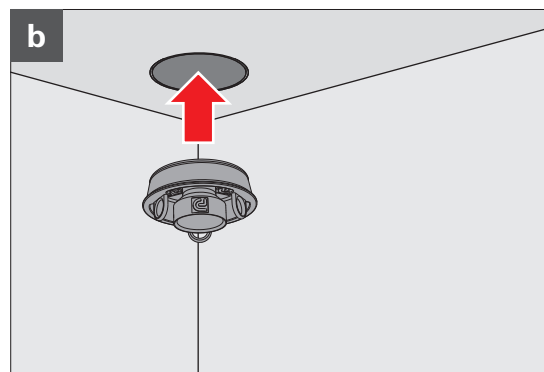
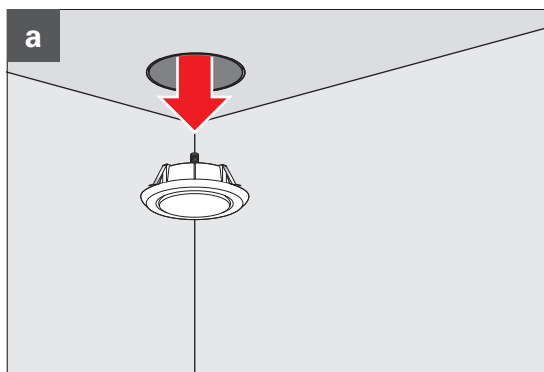


Insert the pull unit into the pipe system only when the pull and safety cord is attached.



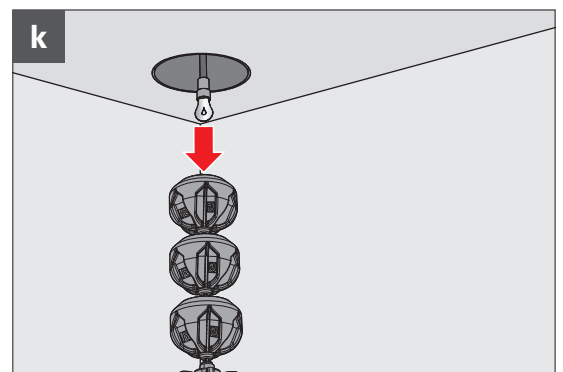
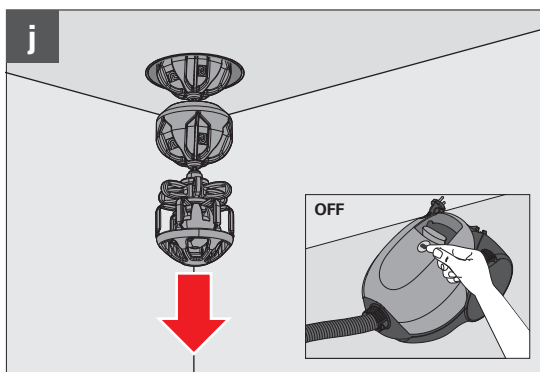
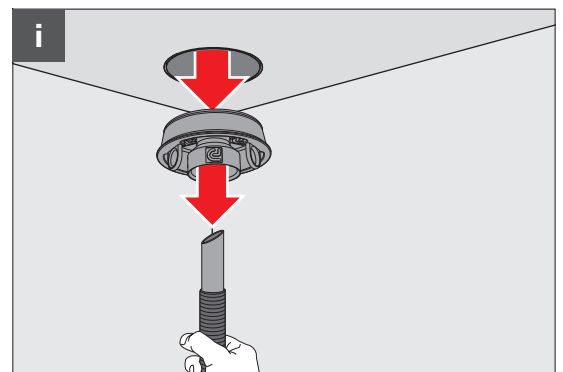
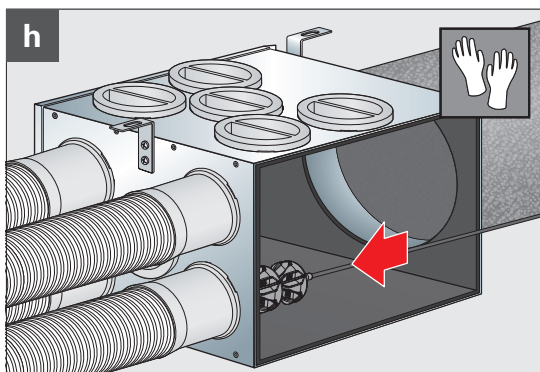
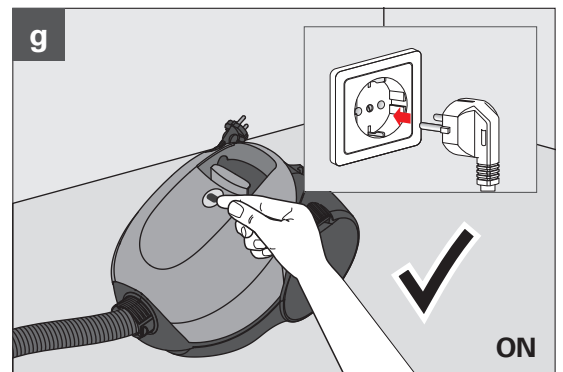
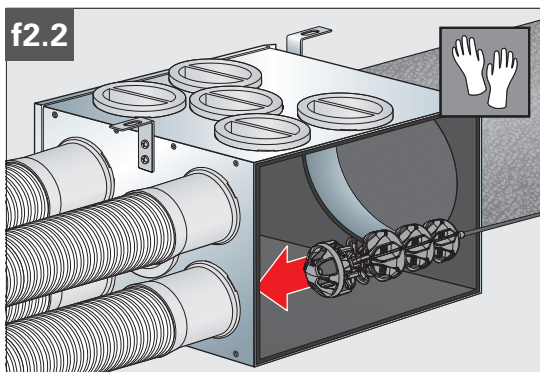
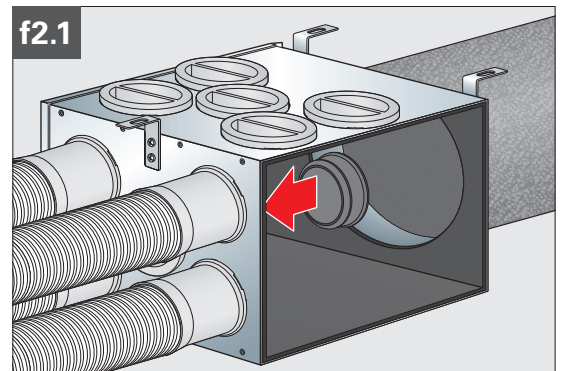
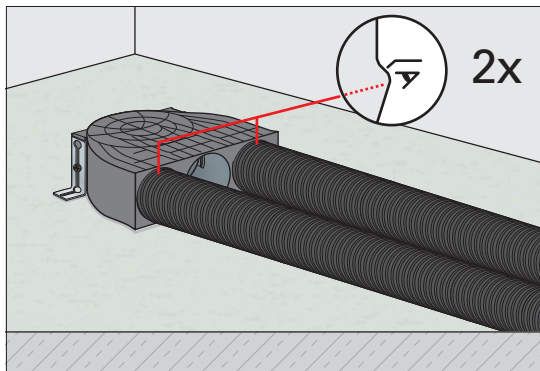
4 Cleaning

4.1 Valves located below the manifolds



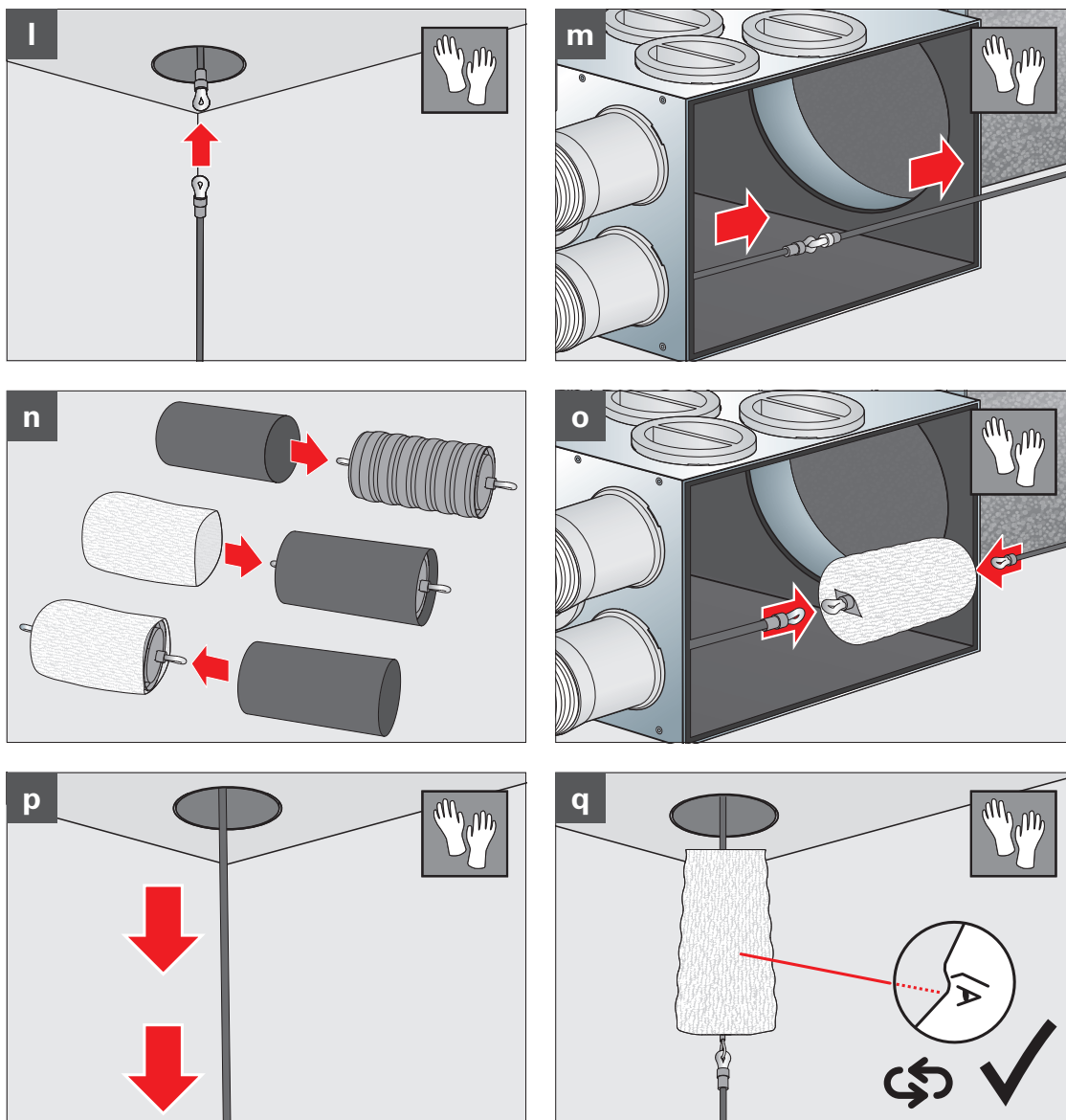
4 Cleaning

4.1 Valves located below the manifolds



4 Cleaning

4.1 Valves located below the manifolds



After the first cleaning run, it shall be decided on the basis of the degree of pollution of the cleaning cloth whether or not it has to be exchanged, and whether another cleaning run is required. To do so, detach the cleaning pig from the pull and safety cords. Subsequently, follow the instructions from step l.



Always secure the cleaning pig with two pull and safety cords. This will allow you to pull it out of the pipe in case of emergency.



Insert the pull unit into the pipe system only when the pull and safety cord is attached.



Wear protective gloves during all work steps marked accordingly; otherwise, there is a risk of injury.

4 Cleaning

4.2 Valves located above the manifolds

This section describes the cleaning process with the valves installed above the manifold (see drawing).



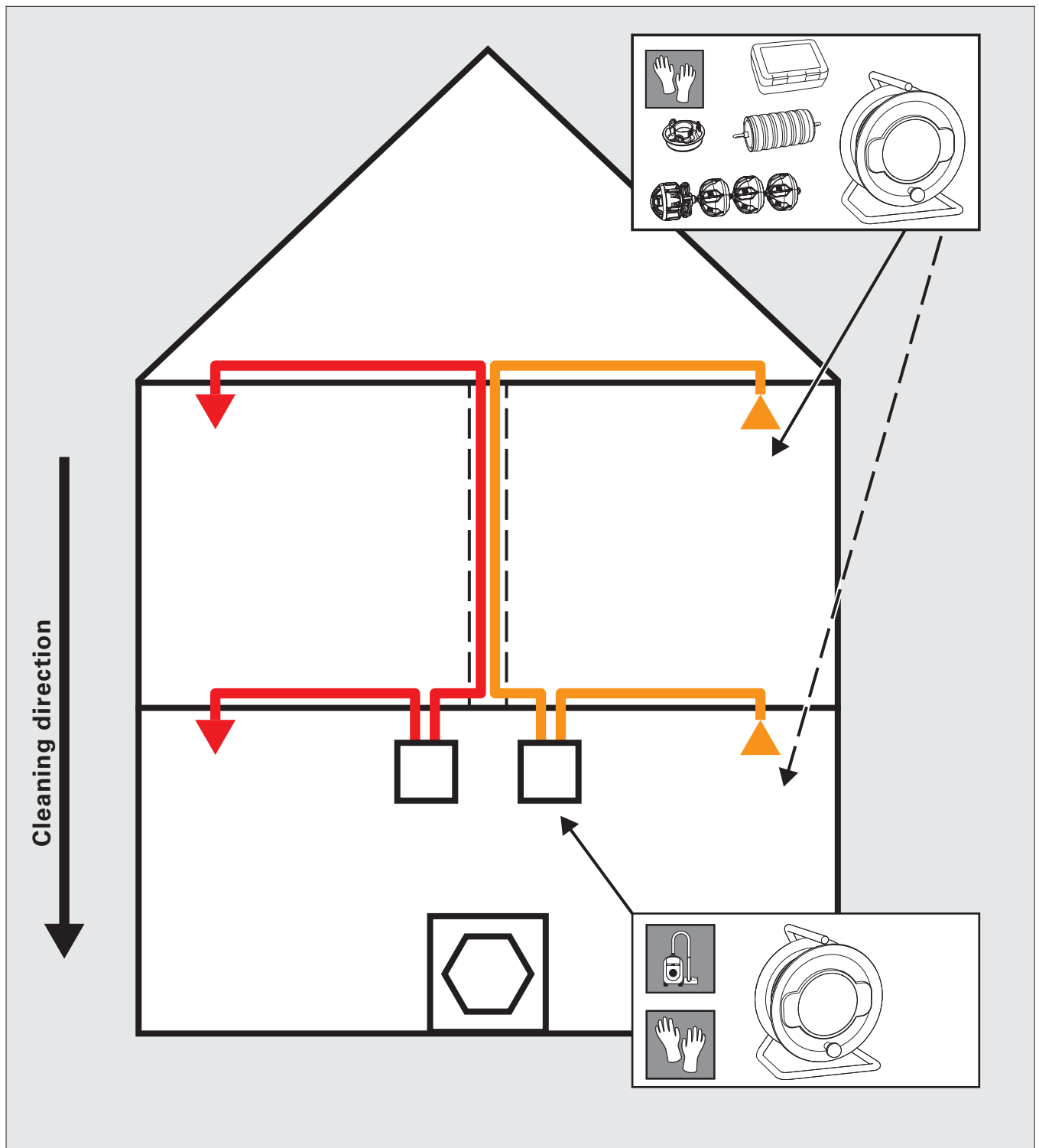
Always secure the cleaning pig with two pull and safety cords. This will allow you to pull it out of the pipe in case of emergency.



Wear protective gloves during all work steps marked accordingly; otherwise, there is a risk of injury.

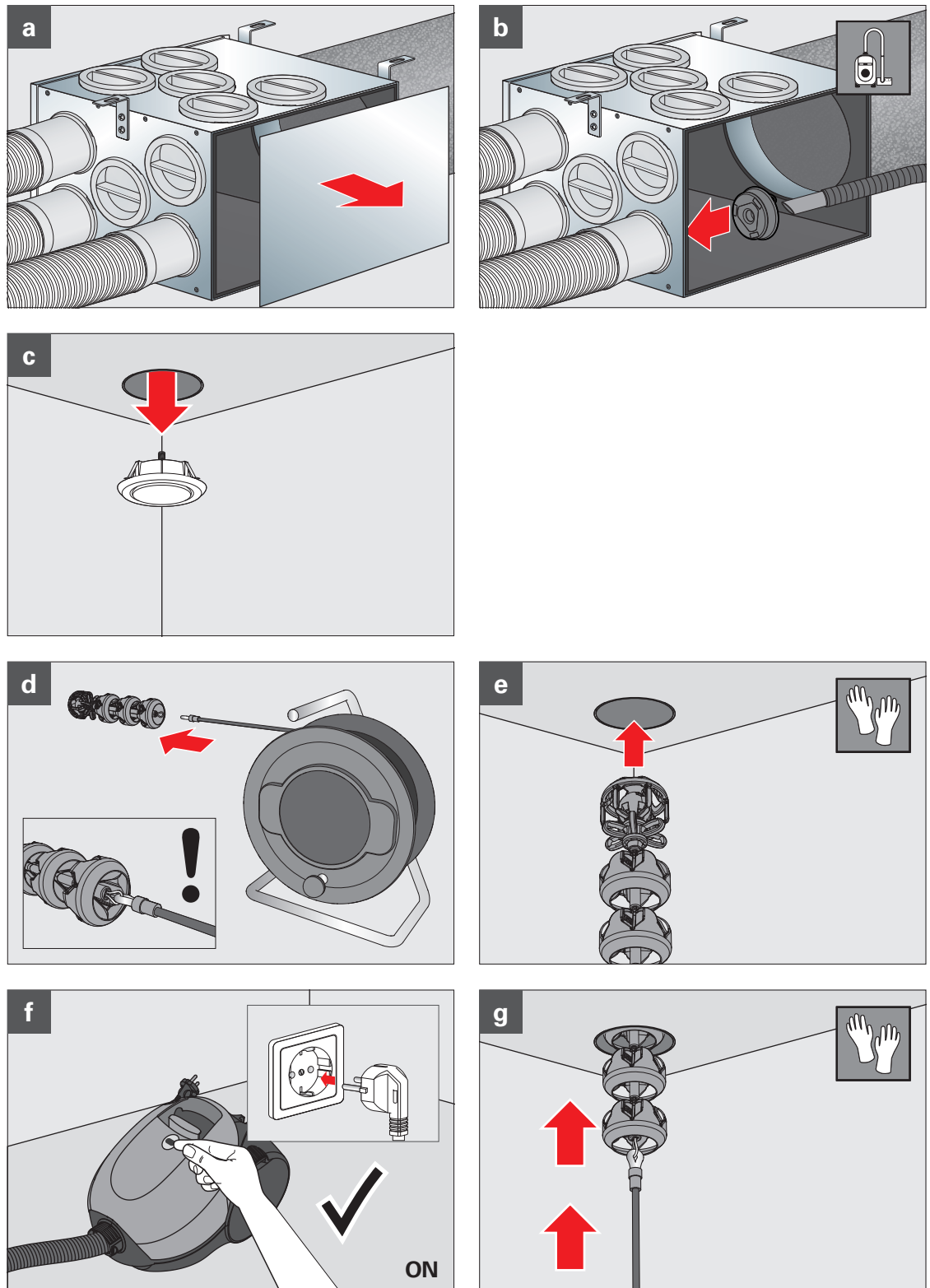


Insert the pull unit into the pipe system only when the pull and safety cord is attached.



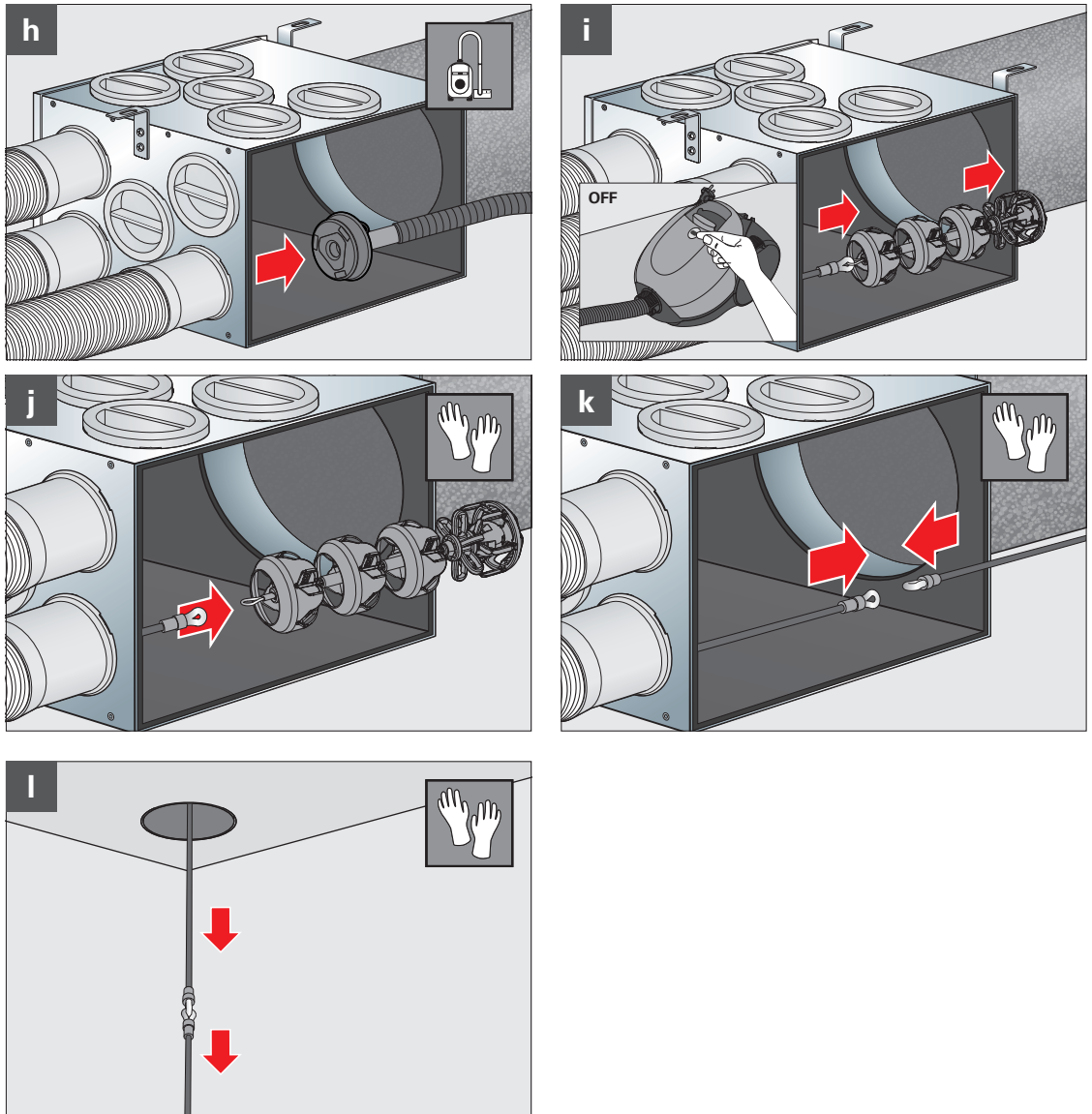
4 Cleaning

4.2 Valves located above the manifolds



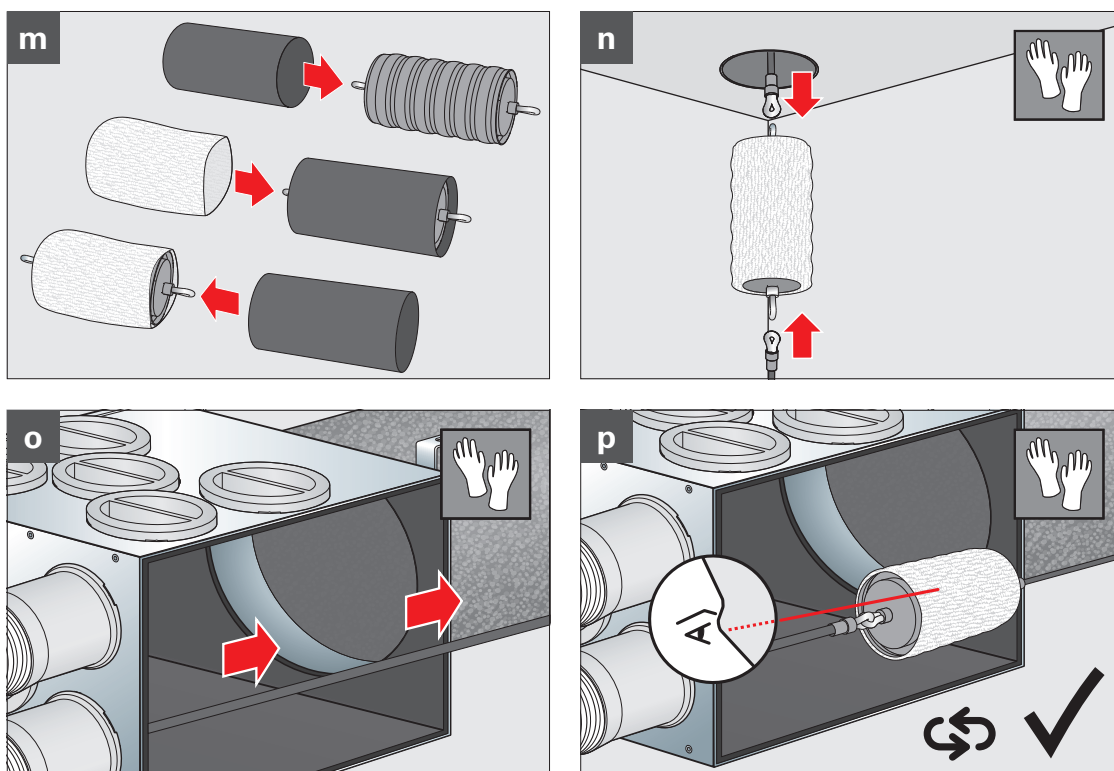
4 Cleaning

4.2 Valves located above the manifolds



4 Cleaning

4.2 Valves located above the manifolds



After the first cleaning run, it shall be decided on the basis of the degree of pollution of the cleaning cloth whether or not it has to be exchanged, and whether another cleaning run is required. To do so, detach the cleaning pig from the pull and safety cords. Subsequently, follow the instructions from step k.



Always secure the cleaning pig with two pull and safety cords. This will allow you to pull it out of the pipe in case of emergency.



Insert the pull unit into the pipe system only when the pull and safety cord is attached.



Wear protective gloves during all work steps marked accordingly; otherwise, there is a risk of injury.

5 Maintenance and cleaning

Please note the following information. Non-compliance may result in a reduced service life of the SaWi cleaning set for profi-air.



Clean all components according to the degree of pollution after you have accomplished the cleaning procedure.



Dirty cleaning cloths can be washed in a washing machine or under running water.



All other components from the set can be washed under running water.



Have a conventional vacuum cleaner ready. Have the respective profi-air cleaning set as well as the pull and safety cords ready.



Please make sure that all components have been properly dried prior to putting them back into the box.

6. Warranty

Deviating from the applicable GTCs, the manufacturer grants a warranty of 12 months from the time of purchase for the SaWi cleaning set for profi-air and its accessories. Warranty claims can only be asserted for material and/or construction defects occurring within the warranty period. In case of a warranty claim, the SaWi cleaning set for profi-air may not be disassembled without the prior written consent of the manufacturer.

Warranty expires if

- the warranty period ends.
- the profi-air cleaning set has not been subjected to maintenance and cleaning as specified in Section 5.
- unauthorised changes or modifications have been made to the profi-air cleaning set.

7 Liability

The SaWi cleaning set for profi-air has been designed for cleaning the profi-air classic pipes used in so-called comfort ventilation systems. Any other application is considered “improper” and can lead to damage to the profi-air cleaning set and/or profi-air pipe system, or personal injury which the manufacturer cannot be held liable for.

The manufacturer is not liable for damage attributed to the following causes:

- Failure to comply with the safety, operating and maintenance instructions stated herein.
- Failure to comply with the directions specified under “Intended use” (Section 1.3).
- Unauthorised changes or modifications made to the profi-air cleaning set.
- Normal wear.

Our “General Terms and Conditions” (please see www.fraenkische.com) apply additionally in their currently valid form.

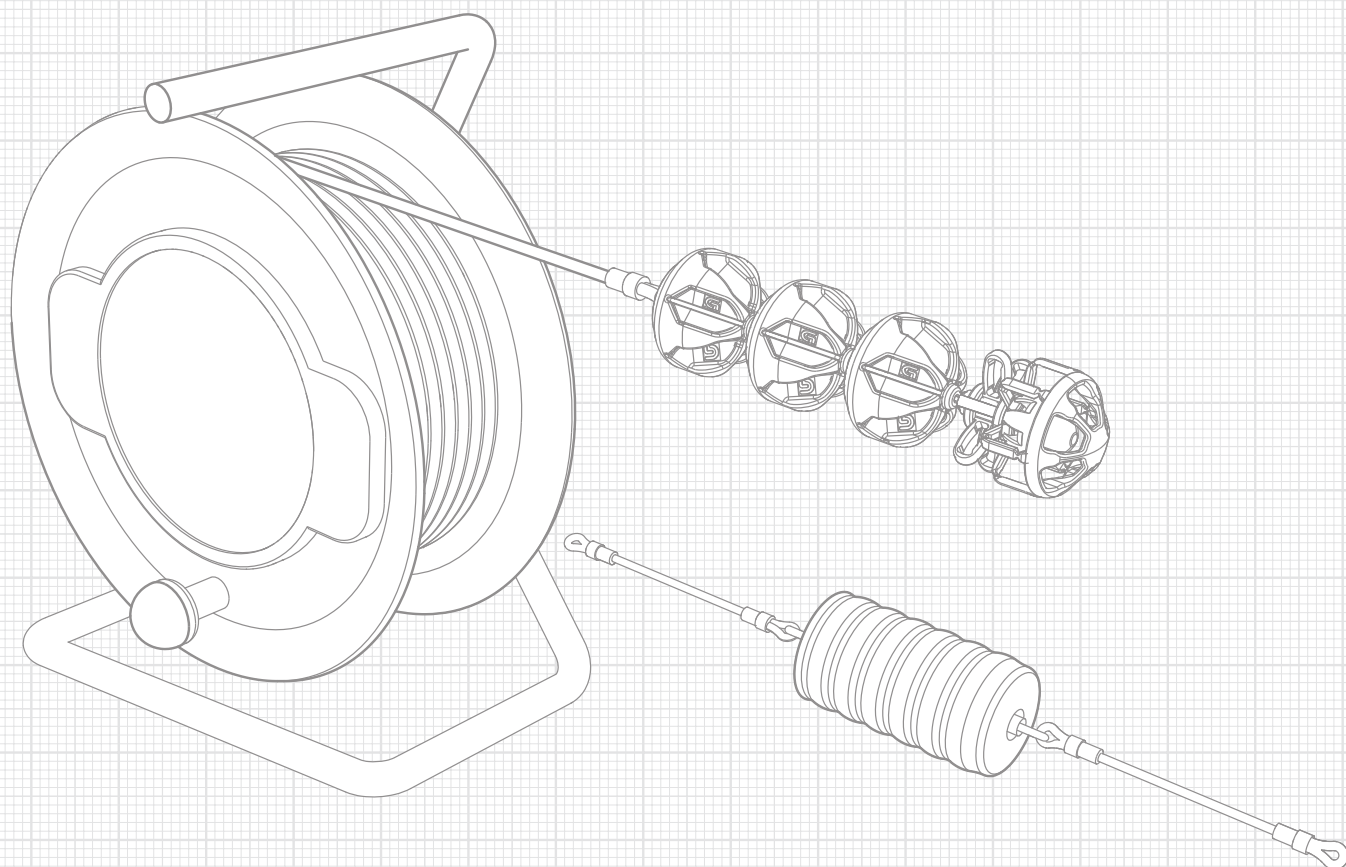
8 Disposal

Please do not dispose of the SaWi cleaning set for profi-air with the normal household waste; please ask your municipal waste consulting authority about collection points and recycling possibilities.

Dirty cleaning cloths can be disposed of with the household waste.

Notes

This image shows a single page of white paper with horizontal blue or grey ruling lines. The lines are evenly spaced and run across the width of the page, leaving small gaps between them. There are no margins, text, or other markings on the page.



FRÄNKISCHE

FRÄNKISCHE Rohrwerke Gebr. Kirchner GmbH & Co. KG | Hellinger Str. 1 | 97486 Königsberg/Germany
Phone +49 9525 88-2200 | Fax +49 9525 88-92200 | marketing@fraenkische.de | www.fraenkische.com

EN.70130/2.08.21 | Subject to change without notice | Cat no. 5000-1729-00 | 02/2021