

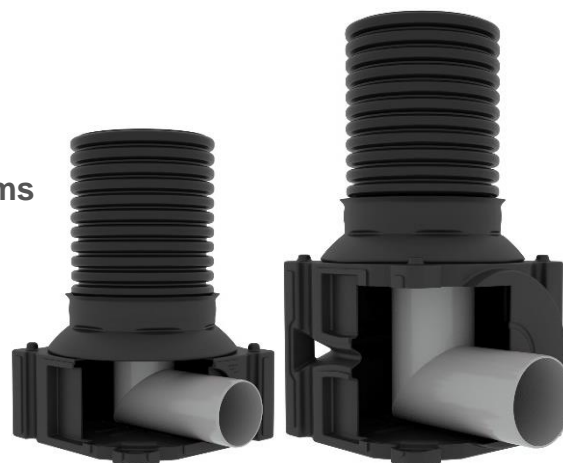
# Stormwater management

## Stormwater discharge

### Quadro® Overflow

#### System shaft for stormwater retention systems




PE-HD shaft, block type structure, consisting of shaft base body and cone, colour black, dimensions compatible with Rigofill inspect, 500 mm clear opening diameter. With integrated overflow pipe, top edge of overflow pipe and top edge of system same level, outlet diameter DN/OD 250 resp. DN/OD 315.



III.: QuadroOverflow ½

III.: QuadroOverflow 1

#### Technical data

Application:	System shaft as tank overflow for stormwater retention systems in Rigofill design to limit the maximum water level. QuadroOverflow can be installed at any point alongside the storage/infiltration system. In multiple-layer systems, it is installed in the top storage/infiltration system layer.		
Material / raw material:	Shaft: PE-HD (polyethylene)		
Dimensions: Length x width [m]	0.80 x 0.80		
Height (without cone): [cm]	QuadroOverflow ½ 0.35	QuadroOverflow 1 0.66	
Nominal diameter of outlet pipe connections:	DN/OD 250	DN/OD 315	
Height of cone: [m]	0.23 (watertight cone)		
Inside diameter of cone: [m]	0.50		
Nominal diameter of extension pipe:	DN 500 (accessories) see extension pipe Do 600 product data sheet		<a href="http://www.fraenkische.com">www.fraenkische.com</a>
Accessories:	For QuadroControl Do 600 accessories, see Price catalogue / Stormwater management manual		<a href="http://www.fraenkische.com">www.fraenkische.com</a>
Miscellaneous:	Installation according to "Rigofill inspect" installation manual		<a href="http://www.fraenkische.com">www.fraenkische.com</a>