

Installation / operating instructions

profi-air® 180 flat condensate pump

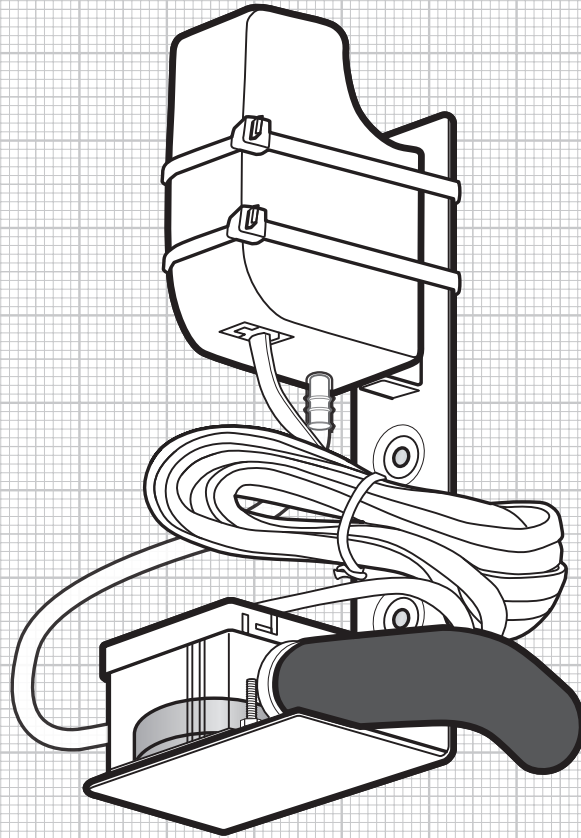


Table of contents

1 General	4
1.1 Introduction	4
1.2 Safety	4
2 Intended use	5
3 Structure	5
4 Technical data	5
4.1 Device specifications	5
4.2 Capacity diagram	5
5 Installation	6
5.1 Parts overview of the entire condensate pump kit	7
5.2 Installation of the condensate pump	8
6 Warranty	11
7 Liability	11
8 Disposal	11

All information in this publication generally reflects the state of the art at the time of printing. Furthermore, considerable care was taken when preparing this publication. Nevertheless, typesetting and translation errors cannot be entirely excluded. We also reserve the right to make changes to our products, specifications and other data. Changes may also become necessary as a result of legal, material-related or other technological requirements, which cannot or can no longer be considered in this publication. For this reason, we cannot assume any liability which is based solely on the data provided in this publication. The decisive role with regard to the data on products and services is always played by the order placed, the product actually purchased and the documentation in connection with it, or the information provided by our specialist staff in each specific individual case.

1 General

The profi-air condensate pump reliably discharges condensate from the profi-air 180 flat ventilation unit. It is required if a free condensate drain at a gradient of at least 2 % cannot be guaranteed. The delivery includes all necessary parts to connect the condensate pump to the ventilation unit.

1.1 Introduction

These installation and operating instructions are intended to help you install fully functional profi-air condensate pumps and properly operate them. We recommend that you read these instructions carefully before you install and use the pump. These installation and operating instructions can also serve as a reference for service and maintenance work and thus guarantee smooth and efficient operation.

1.2 Safety

If used for the intended purpose, the device is safe and reliable to operate. The construction and design are state of the art and comply with all relevant DIN / VDE regulations and safety provisions. All safety regulations, warnings and notices of these installation and operating instructions have to be complied with; non-compliance might result in personal injury and/or damage to the profi-air condensate pump.

1.2.1 Safety regulations

- Connection and putting into operation of the profi-air condensate pump must be performed by authorised and qualified personnel only.
- Installation of the profi-air condensate pump must be carried out according to applicable local construction, safety and installation regulations.
- Changes or modifications of the profi-air condensate pump are not permitted.
- Keep these installation and operating instructions near the device during the entire life of the profi-air condensate pump.

1.2.2 Symbols used



Risk of personal injury



Risk of:

- damage to equipment
- errors while operating the device if the instructions are not complied with correctly
- other material damage



Additional notices



Reference to other sections and/or guidelines of the manufacturer



Disposal instructions

2 Intended use

The profi-air condensate pump has been designed for use with the profi-air 180 flat ventilation unit only and ensures the reliable discharge of condensate. The profi-air condensate pump is directly connected to the control of the profi-air 180 flat ventilation unit.

Depending on the operating mode of the ventilation unit (A or B), it must always be installed on the exhaust air / fresh air side.

3 Structure

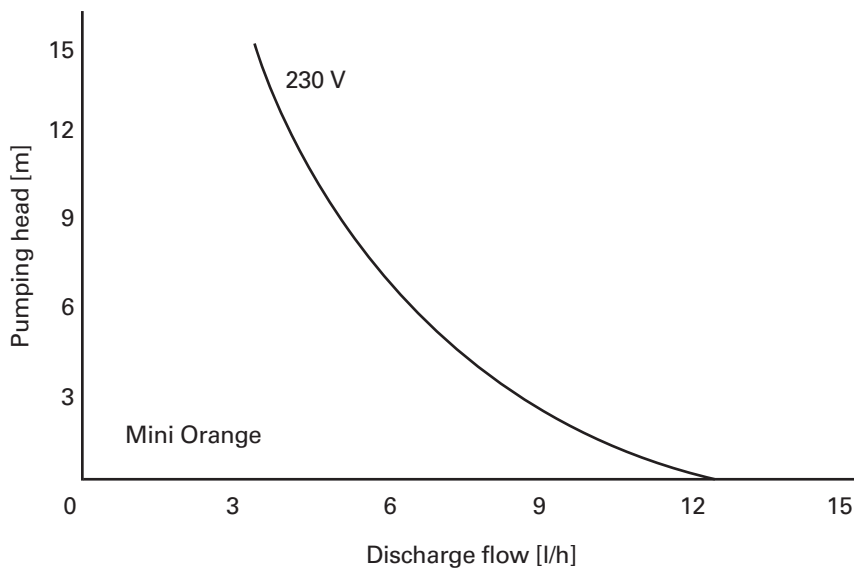
The profi-air condensate pump consists of a pump to discharge small amounts of condensate. The condensate pump is controlled via a float switch. This ensures that the pump only operates if there is condensate. The delivery includes all parts to connect the condensate pump power and condensate lines to the ventilation unit.

4 Technical data

4.1 Device specifications

■ Electric connection:	230 V, 50/60 Hz	■ Max. pumping head:	10 m
■ Electric capacity:	0.17 A / 16 W	■ Max. suction head:	1 m
■ Max. discharge flow:	12 l/h (with a pumping head of 0 m)	■ Noise level:	25 dB(A) (with a distance of 1 m)

4.2 Capacity diagram



5 Installation

In the following section, the individual installation steps will be described to ensure safe installation of the condensate pump.



Please note that the condensate pump must always be installed on the fresh air / exhaust air side of the ventilation unit. This may vary depending on the operating mode (A or B) of the profi-air 180 flat ventilation unit.



The condensate pump must always be installed vertically so that the float switch in the condensate housing can operate properly.

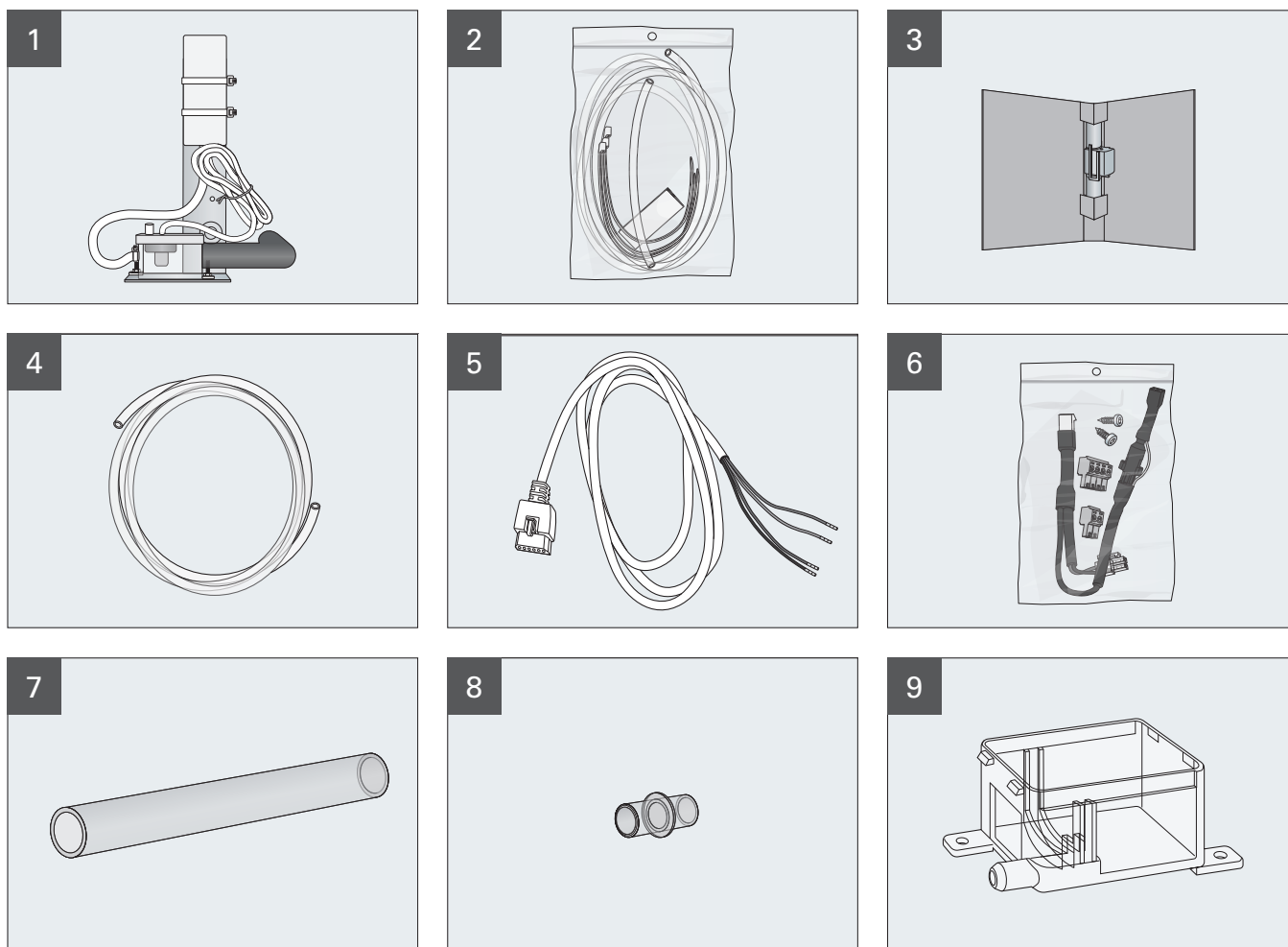
- Horizontal ventilation unit installation (ceiling installation) mount condensate pump on the housing wall of the ventilation unit.
- Vertical ventilation unit installation (wall installation) mount condensate pump below the ventilation unit on the building wall (an on-site subconstruction is required in this case).



Installation and putting into operation of the condensate pump must be carried out by authorised and qualified personnel and in the “dead” state of the device only. In addition, applicable local regulations and safety provisions must be complied with.

5 Installation

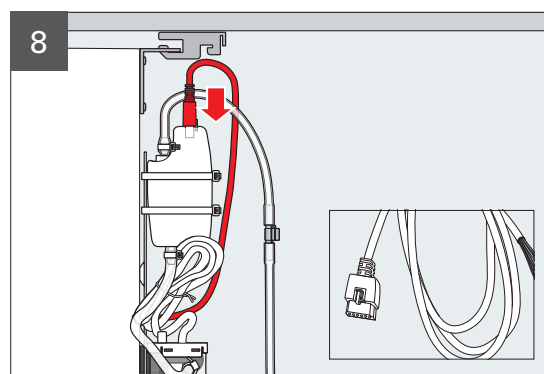
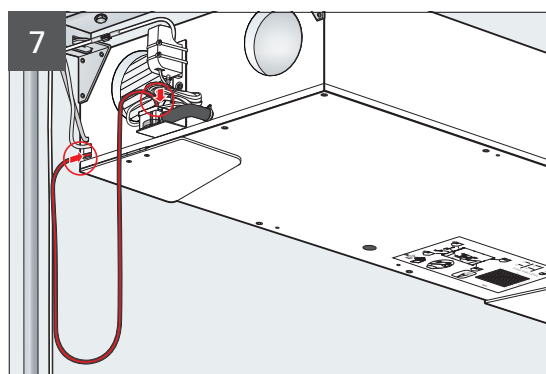
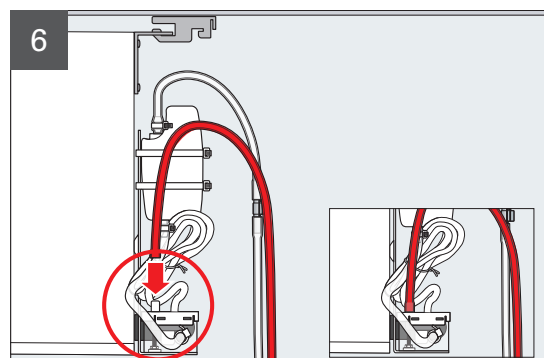
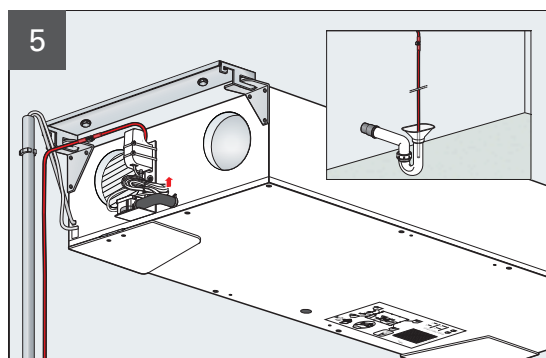
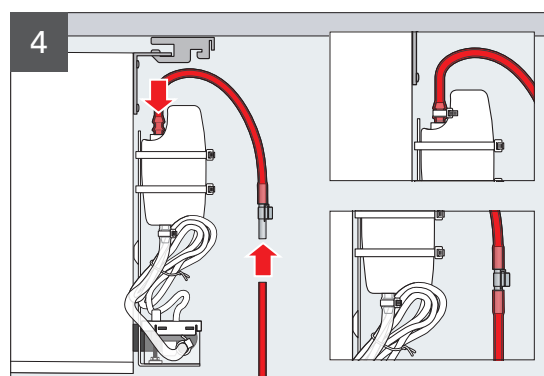
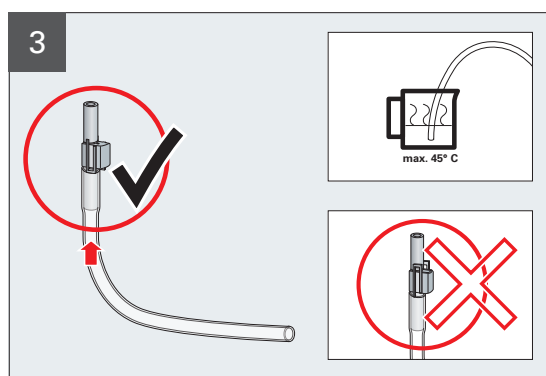
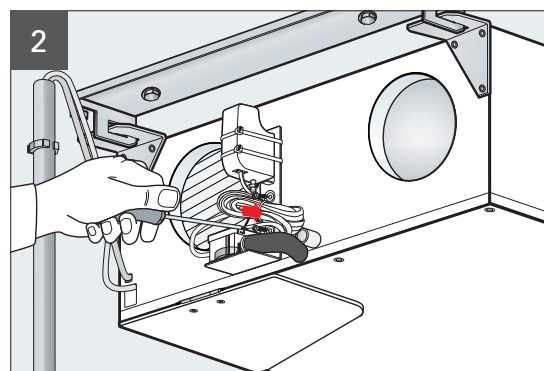
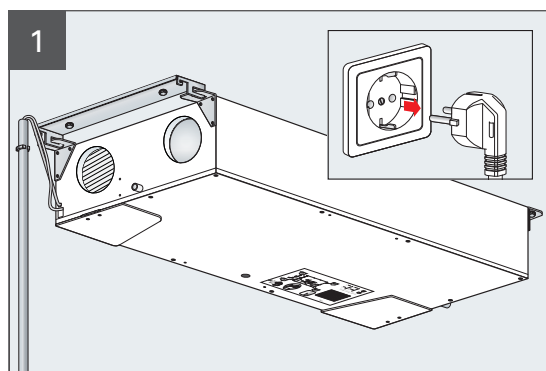
5.1 Parts overview of the entire condensate pump kit



No.	Description
1	Pre-installed condensate pump unit
2	Pressure lines plastic bag includes: transparent hose for pressure line, approx. 15 cm long transparent hose for pressure line, approx. 150 cm long 3 x cable ties, approx. 30 cm long self-adhesive hook-and-loop fastener strip (not required for profi-air 180 flat)
3	Anti-lift valve
4	Transparent silicone hose for pressure compensation, approx. 200 cm long
5	Connection cable to connect condensate pump to profi-air 180 flat control board
6	Cable and installation accessories plastic bag includes: 2 x screws to secure the condensate pump unit to profi-air 180 flat Y-cable to connect condensate pump to profi-air 180 flat control board 2-pin connector plug for power supply of the condensate pump 2-pin connector plug to connect condensate pump to digital input on the control board profi-air 180 flat (high water level alarm signal)
7	Inlet hose, Ø 12 mm x 210 mm (only required if the profi-air 180 flat ventilation unit has been installed vertically on the wall)
8	Connection nipple for inlet hose (only required if the profi-air 180 flat ventilation unit has been installed vertically on the wall)
9	Alternative condensate housing (not required for profi-air 180 flat)

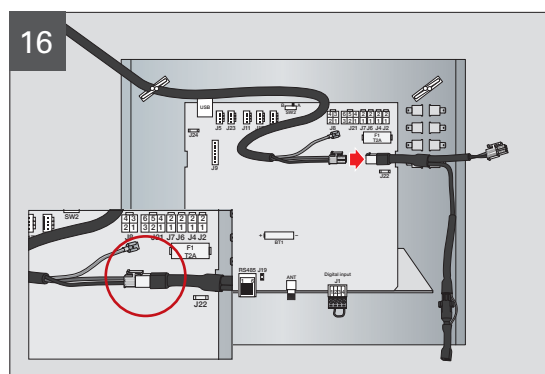
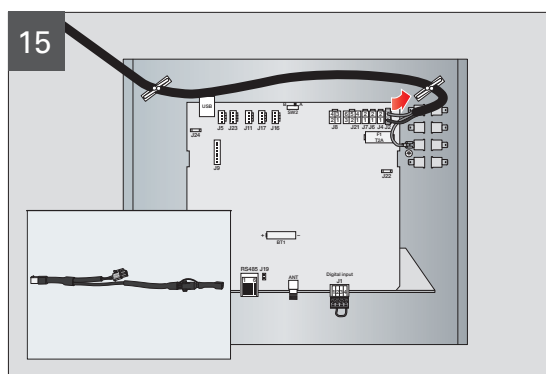
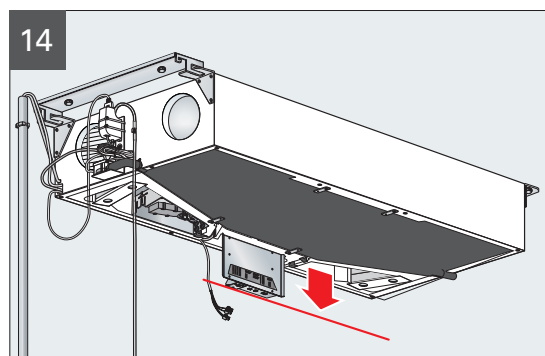
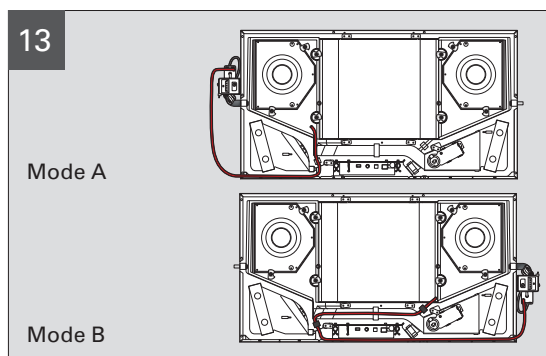
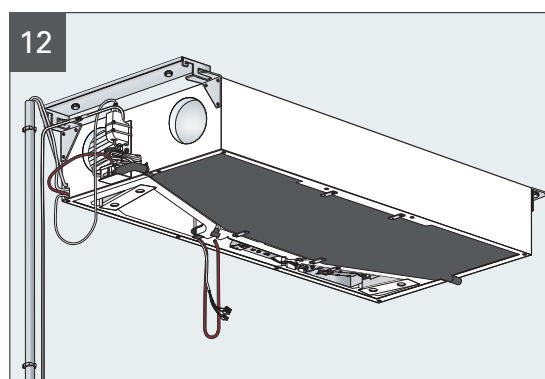
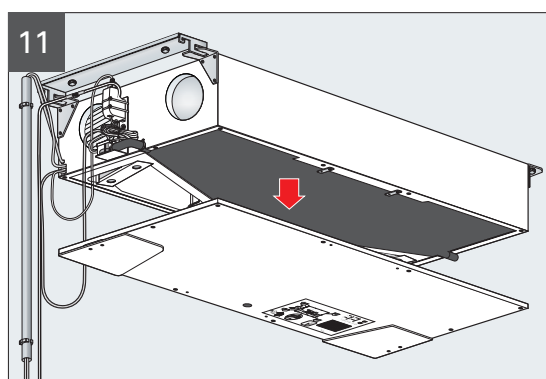
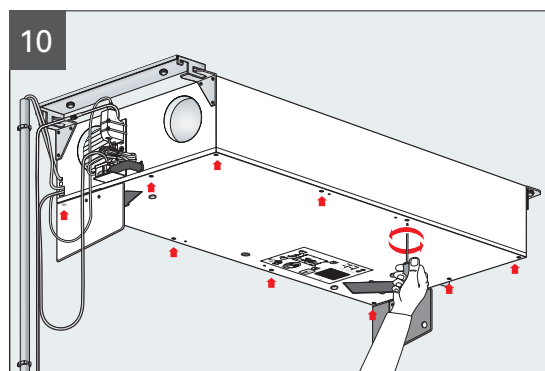
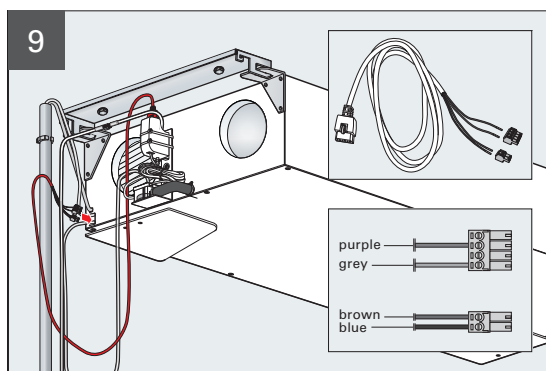
5 Installation

5.2 Installation of the condensate pump



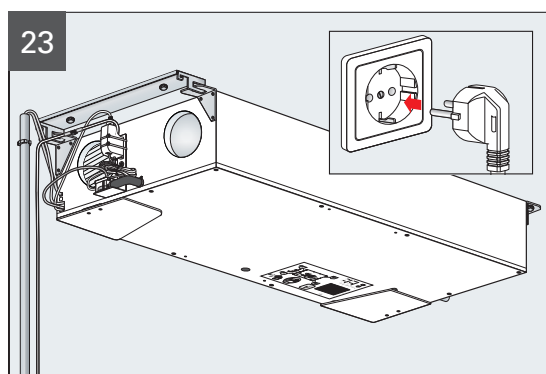
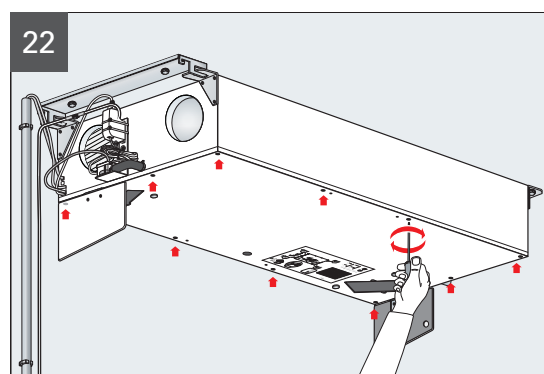
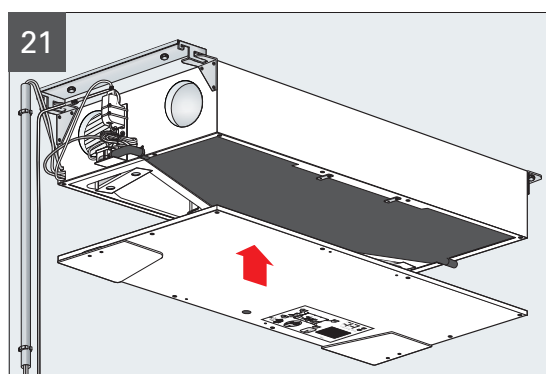
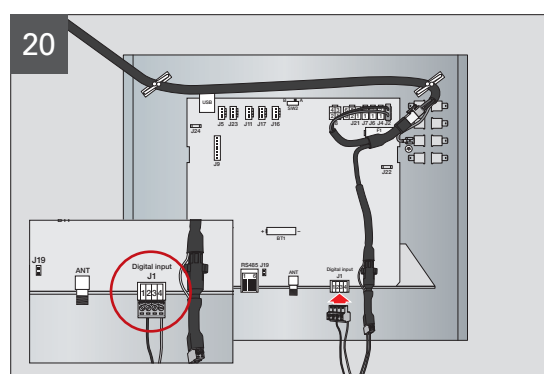
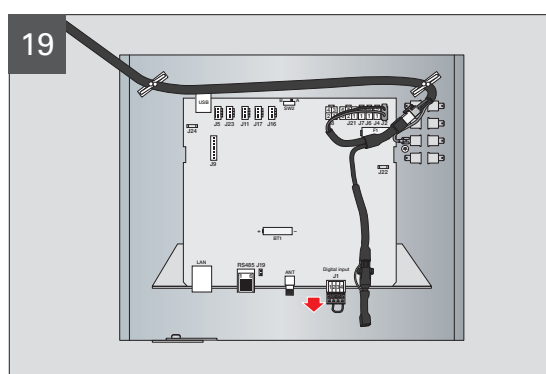
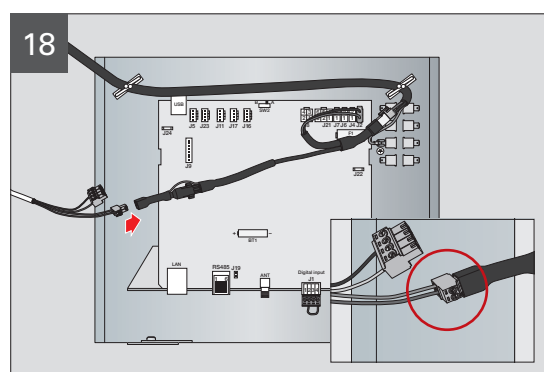
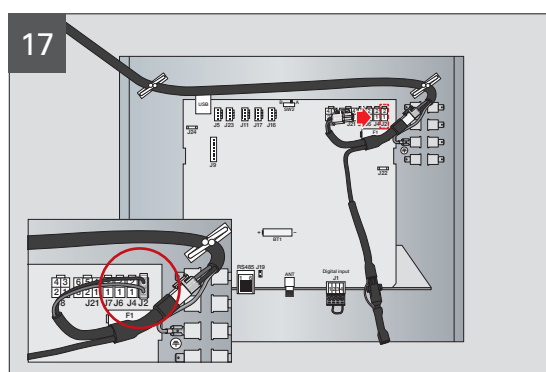
5 Installation

5.2 Installation of the condensate pump



5 Installation

5.2 Installation of the condensate pump



6 Warranty

Deviating from the applicable GTCs, the manufacturer grants a warranty of 24 months from the time of completion of the installation for the profi-air condensate pump. Warranty claims can only be asserted for material and/or construction defects occurring within the warranty period. In case of a warranty claim, the profi-air condensate pump may not be removed without the prior written consent of the manufacturer.

Warranty expires if:

- the warranty period ends.
- the unit is operated without a filter.
- the condensate pump is used without a prefilter in the condensate housing.
- parts not provided by the manufacturer are installed.
- unauthorised changes or modifications to the unit are made.

7 Liability

The profi-air condensate pump has been developed and produced for use in so-called comfort ventilation systems. Any other use is considered “improper” and can lead to damage to the profi-air flat ventilation unit or personal injury which the manufacturer cannot be held liable for.

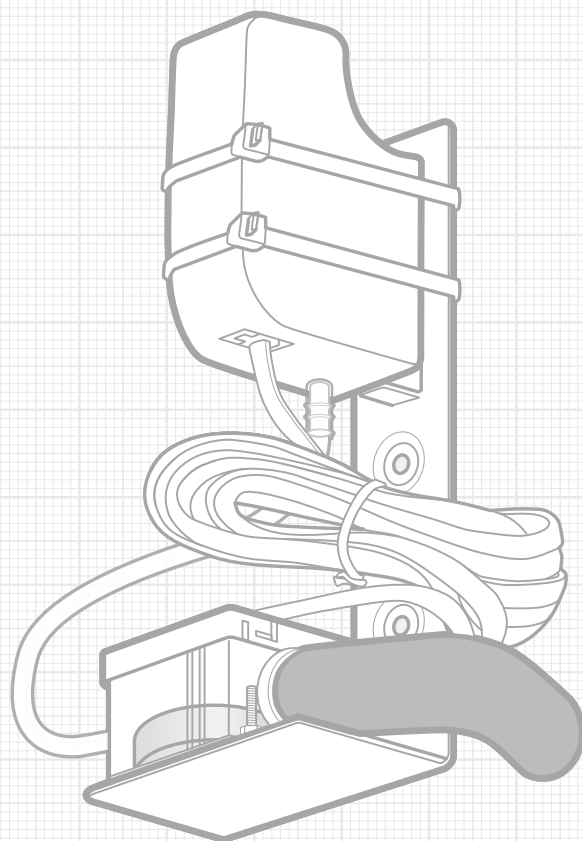
The manufacturer is not liable for damage attributed to the following causes:

- Failure to comply with the safety, operating and maintenance instructions stated herein.
- Installation of spare parts not provided or stipulated by the manufacturer.
The responsibility for the use of such spare parts rests solely with the installer.
- Normal wear and tear.

In addition, our “General Terms and Conditions” apply as amended, available at www.fraenkische.com.

8 Disposal

Please do not dispose of the profi-air condensate pump with the normal household waste; please ask your municipal waste consulting authority about collection points and recycling possibilities.



FRÄNKISCHE

FRÄNKISCHE Rohrwerke Gebr. Kirchner GmbH & Co. KG | Hellinger Str. 1 | 97486 Königsberg/Germany
Phone +49 9525 88-2200 | Fax +49 9525 88-92200 | marketing@fraenkische.de | www.fraenkische.com

EN.70149/3.02.21 | Subject to change without notice | Cat. No. 5000-1343-00 | 01/2018